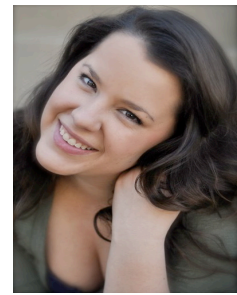


Reagan Dickey

Stage Manager

205.253.4431
@ Reagan.Dickey@gmail.com
www.ReaganDickey.com



Experience

Stage Manager	<i>A Child's Christmas In Wales</i>	Ray Woodall	Stone Soup Theatre
Stage Manager	<i>The Long Christmas Dinner</i>	Ray Woodall	Stone Soup Theatre
Stage Manager	<i>Blackout. (World Premiere)</i>	Barrett Guyton	University of Alabama
Stage Manager	<i>Essential Self-Defense</i>	JJ Marrs	Theatre Downtown
Stage Manager	<i>Taming of the Shrew</i>	Steve Burch	Rude Mechanicals
Stage Manager	<i>The Wiz</i>	Crystal Banks	Timber Lake Playhouse
Asst. Stage Manager	<i>The Violet Hour</i>	Matthew Burkholder	University of Alabama
Asst. Stage Manager	<i>The Winter's Tale</i>	Guy Fauchon	University of Alabama
Asst. Stage Manager	<i>Thoroughly Modern Millie</i>	Ed Williams	University of Alabama
Asst. Stage Manager	<i>The Wild Party</i>	Marian Mantovani	University of Alabama
Director	<i>Into The Woods</i>	Reagan Dickey	Timber Lake Playhouse
Director	<i>Annie</i>	Reagan Dickey	Timber Lake Playhouse

Training

University of Alabama. BA in Theatre. May 2011.

Make-Up Design:	Donna Meester, Emma Cullimore
Stage Management:	Ed Williams, Matthew Burkholder, Guy Fauchon, Alex Perkins, Will Cotton
Theatre Management:	Chris Montpetit, Travis Ray, Tommy Adkins
Stage Combat:	Seth Panitch
Dance:	<i>Ballet</i> (Rita Snyder, Jennifer Van Valkenburgh Goecke); <i>Jazz/Theatre Dance</i> (Kim Wolfe, Joni Scofield, Sara DeFuniak Walker, Lindsay Coker Corley, Shea Sullivan, Shelia Barker, Dee Caspary, Tyce Diorio); <i>Tap/Clogging</i> (Shad Simpson, Missa Pruitt, Cindy Larsen, Sandy Coker, Joni Scofield); <i>Hip Hop</i> (Natalie Virciglio Simpson, John Virciglio, Lindsay Coker Corely)

Professional Experience

Timber Lake Camp. Specialty Instructor. Summer 2010 & 2011.

Dance Instructor. Theatre Director/Choreographer. Make-Up Designer.

Storyville Station. Character Performer. June 2007-December 2011.

Specialty Themed Children's Events.

Special Skills

Stage Make-Up Design: Old Age, Character, Gore, Prosthetics, Masks, Molds, Wig Experience; Valid Driver and Vessel License; Works Well with Children; Proficiency in Windows and Mac Operating Systems and MS Office; Costuming: Hand Stitching, Machine Sewing, Alterations; Marketing: Advertising, Ticketing Work, Customer Relations

References

Steve Burch. Former Director, University of Alabama. 205.348.0343.

Guy Fauchon. Former Director, University of Alabama. 205.792.9030.

Sandra Taylor. Former Director, Hoover High School Theatre. 205.290.9041.